



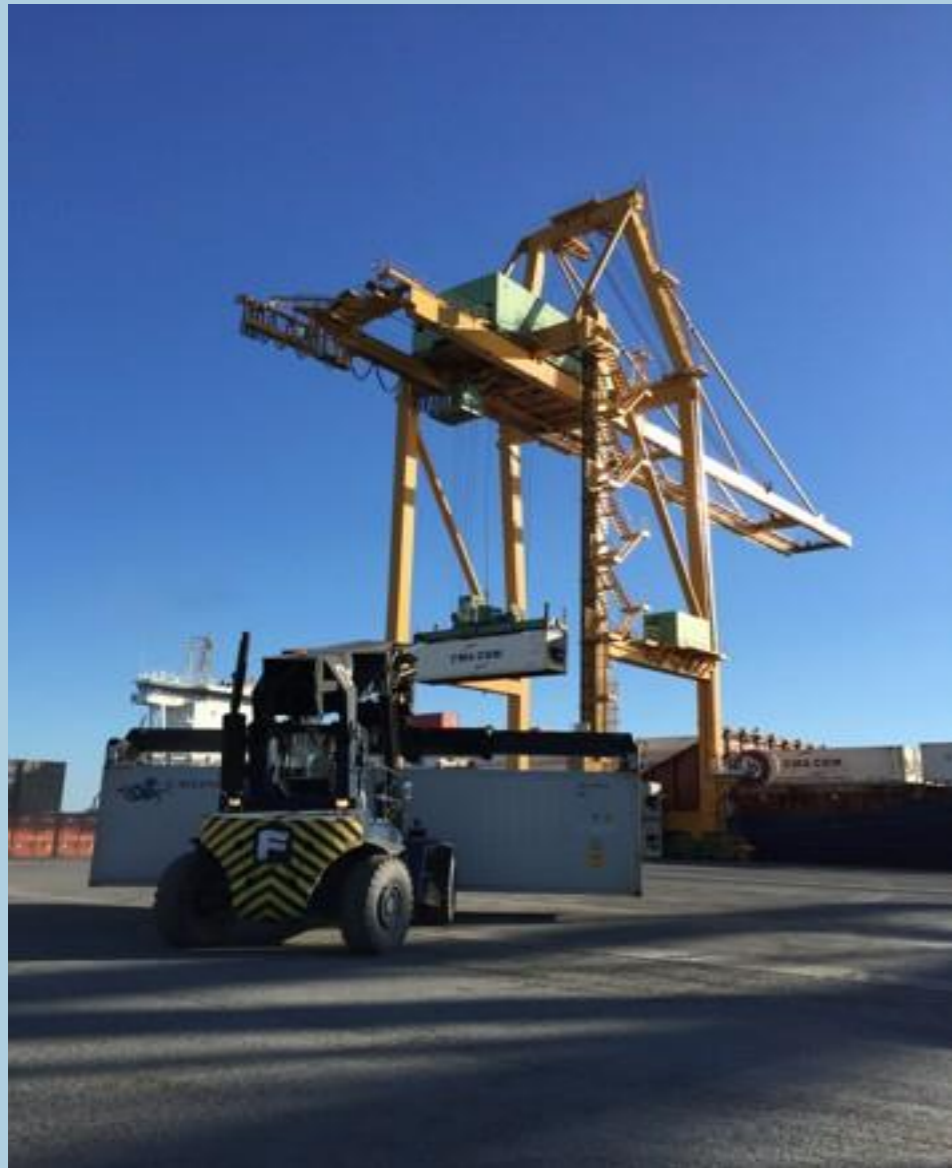
CONCASA

Container Terminal
Huelva, Spain

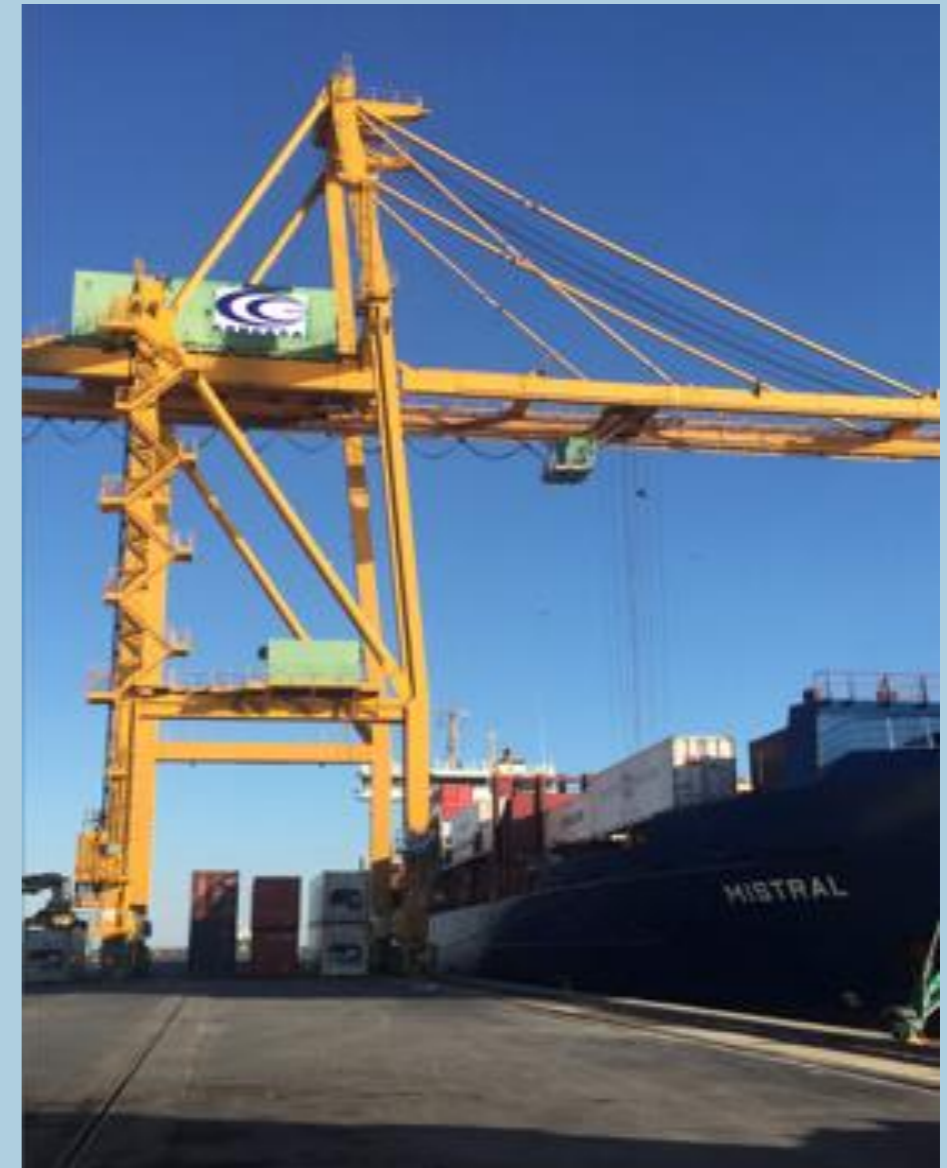
QUAY GANTRY CRANES

Two gantry cranes, one Panamax and the other Post-Panamax.

Berthing line = 463 fixed metres / with possibility to use up to 750 metres.



SERVICE RANGE 35 MTS (13 CONTRS)
HEIGHT UNDER SPREADER 25 MTS
LIFTING CAPACITY UNDER SPREADER 32,5
TONS



SERVICE RANGE 41 MTS (15 CONTRS)
HEIGHT UNDER SPREADER 31,5 MTS
LIFTING CAPACITY UNDER SPREADER 40
TONS

CONTAINER YARD



Current space = 32.117 sqm
Enhancement Jan 2018 = 16.338 sqm
TOTAL Surface 2018 = 48.455 sqm
Yearly capacity 2018 = 84.000 TEU

Reefer facilities = 120 plugs



TRAIN CONNECTIVITY



Rail Terminal besides Container Terminal

Connection to the hinterland by road and by rail

Connection via Seville-Majarabique to all Spanish rail network

Current weekly operations 2 trains in/out with Seville and 1 train in/out with Madrid

Rail ramp with 750 mts length

Current trains with 466 and 485 mts length